



MONTHLY MEMBERSHIP PROGRESS REPORT

District 11 C1

Results as of: 5/31/2017

GMT: THOMAS MATNEY

LOCATION MICHIGAN

GMT CA

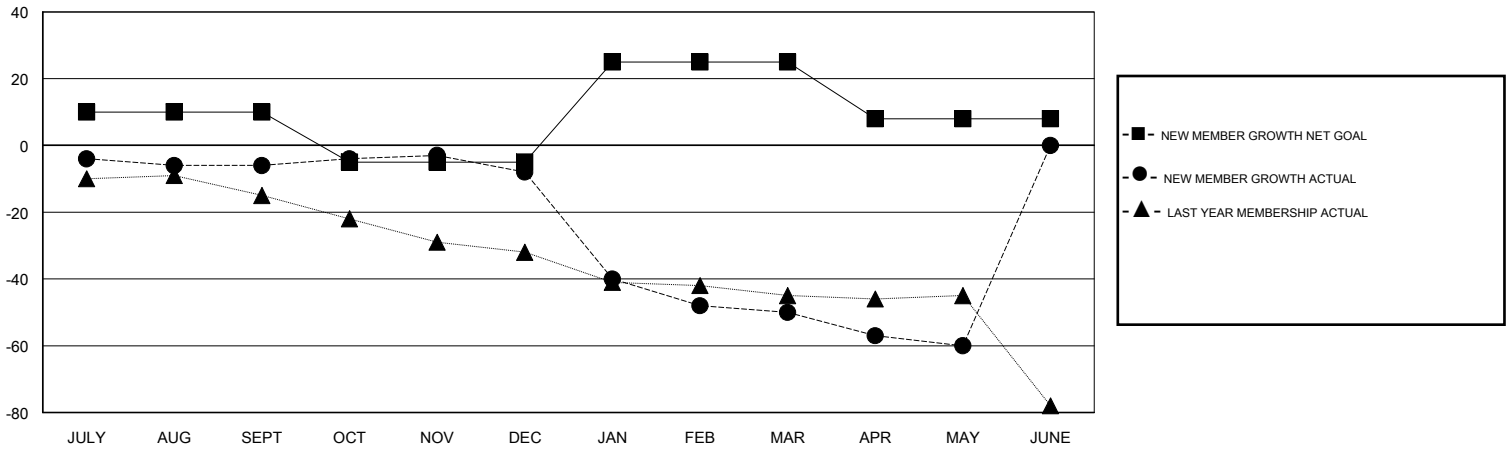
Clubs			
RESULTS FOR 2016-2017			
QUARTER	NEW CLUB GOAL	NEW CLUBS	DROPPED CLUBS
JULY/AUG/SEPT	0	0	1
OCT/NOV/DEC	0	0	0
JAN/FEB/MAR	1	0	0
APR/MAY/JUNE	0	0	0

Members			
RESULTS FOR 2016-2017			
QUARTER	NEW MEMBER GROWTH NET GOAL (not reinstated or transfers)	NEW MEMBER GROWTH ACTUAL (not reinstated or transfers)	DROPPED MEMBERS ACTUAL (including transfers)
JULY/AUG/SEPT	10	15	21
OCT/NOV/DEC	-15	22	24
JAN/FEB/MAR	30	19	61
APR/MAY/JUNE	-17	9	19

GOALS AND ACTUAL NEW CLUBS CUMULATIVE



GOALS AND ACTUAL MEMBERS CUMULATIVE



DROPPED CLUBS: 1	21 CLUBS OF 38 ADDED 1 OR MORE NEW MEMBERS	<u>GENDER DISTRIBUTION</u>	
DROPPED MEMBERS		MALE	632 (69.99%)
DECEASED	12	FEMALE	271 (30.01%)
CLUB CANCELLED	0	TOTAL FAMILY UNIT MEMBERS	
OTHER	113	154	
TOTAL	125	FAMILY MEMBERS PAYING HALF DUES	
		78	

[CLICK HERE FOR CUMULATIVE MEMBERSHIP DATA](#)